

# MONTHLY MEMBERSHIP PROGRESS REPORT

District 11 A1

Results as of: 12/31/2019

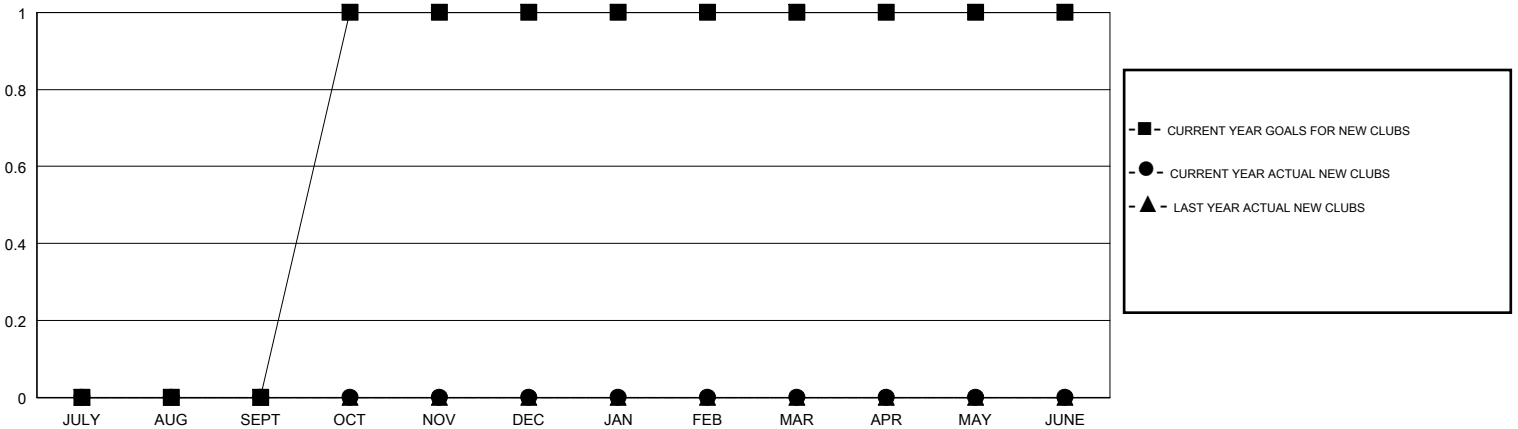
GMT:

LOCATION MICHIGAN

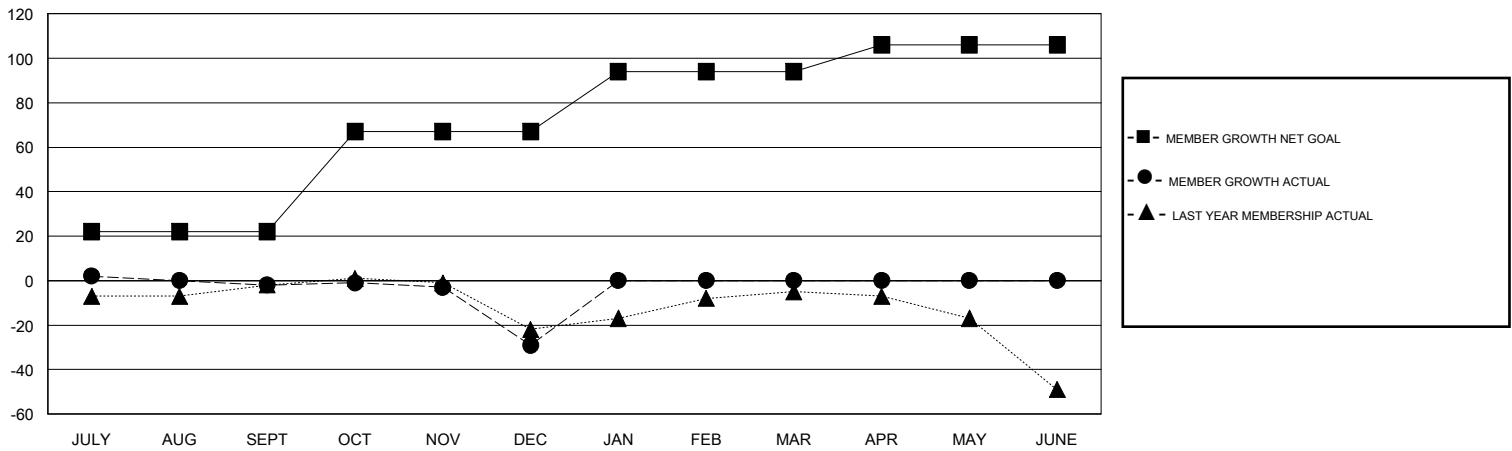
GMT CA

| Clubs                 |               |           |               | Members               |                        |                      |  |
|-----------------------|---------------|-----------|---------------|-----------------------|------------------------|----------------------|--|
| RESULTS FOR 2019-2020 |               |           |               | RESULTS FOR 2019-2020 |                        |                      |  |
| QUARTER               | NEW CLUB GOAL | NEW CLUBS | DROPPED CLUBS | QUARTER               | MEMBER GROWTH NET GOAL | MEMBER GROWTH ACTUAL | DROPPED MEMBERS ACTUAL (including transfers) |
| JULY/AUG/SEPT         | 0             | 0         | 0             | JULY/AUG/SEPT         | 22                     | 21                   | 14   |
| OCT/NOV/DEC           | 1             | 0         | 1             | OCT/NOV/DEC           | 45                     | 15                   | 40   |
| JAN/FEB/MAR           | 0             | 0         | 0             | JAN/FEB/MAR           | 27                     | 0                    | 0  |
| APR/MAY/JUNE          | 0             | 0         | 0             | APR/MAY/JUNE          | 12                     | 0                    | 0  |

GOALS AND ACTUAL NEW CLUBS CUMULATIVE



GOALS AND ACTUAL MEMBERS CUMULATIVE



|   |   |  |
|---|---|--|
| DROPPED CLUBS: 1  | 13 CLUBS OF 35 ADDED 1 OR MORE NEW MEMBERS                | <b>GENDER DISTRIBUTION</b><br>MALE 475 (63.76%)<br>FEMALE 270 (36.24%) |
| <b>DROPPED MEMBERS</b><br>DECEASED 3<br>CLUB CANCELLED 22<br>OTHER 29<br><hr/> TOTAL 54 | <a href="#">CLICK HERE FOR CUMULATIVE MEMBERSHIP DATA</a> | TOTAL FAMILY UNIT MEMBERS 159<br>FAMILY MEMBERS PAYING HALF DUES 84    |